

Learning for life!

Meridian Newsletter

Term 3

**Tuesday 2nd January –
Friday 9th February**

Term 4

**Monday 19th February –
Thursday 28th March**

www.meridianschool.co.uk



Meridian Community Primary
School and Nursery



@MeridianCPS

**Friday
12th**

**January
2024**

HEADTEACHER UPDATE

Dear Parents and Carers

A belated Happy New Year to everyone! I hope you all had a good Christmas break . . . It was a bit of a shock coming back to school so early in January, but once the children arrived on 3rd, it brought a smile to everyone's faces and cheered us all up!

Vision and Values

At the beginning of this academic year, we launched our new vision and values with the school team and Governors. The first day back in January was spent going through these with all the children in an age appropriate way so that the children understand what our values are and why we have them. There's more information further down in this letter about this.

Communication Expectations

I am becoming concerned about the increasing numbers of parents and carers expecting teachers and leaders to respond immediately to emails, phone calls and meeting requests. We are obviously committed to working with you all, however I am sure you will appreciate that we are not always able to provide an immediate response. When you email one of the Year Group emails, there is an automatic reply informing you that responses will be made within 3 school days. This is the same for phone calls and meeting requests with teachers. When requesting a phone call or appointment with the Headteacher, Deputy Headteacher or Assistant Headteacher/SENCo, you need to allow up to 5 schools days for a response – we try our best to respond quicker, but we cannot always guarantee this. Please do consider this when communicating with the school so as to avoid disappointment or frustration.

Children's Parade

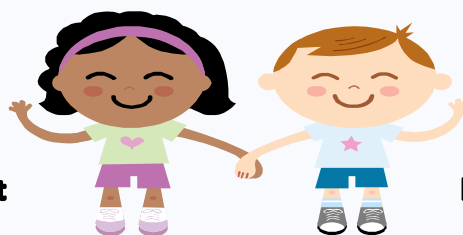
Thank you to all the children who have signed up to get involved in the Children's Parade in May – we are all very excited about taking part again. We are even more excited about us being the leading school!!! The children and Parade team have come up with some ideas for our theme – travelling the world. Once a final design has been decided, the children will be helping make the structure and resources ready to wow everyone! If you would like to see photos of previous Children's Parades, click [here](#) – it's going to be a really wonderful experience!

C. Westcott

Claire Westcott
Headteacher

strength

respect



kindness

honesty

responsibility

IMPORTANT INFORMATION

TERM DATES 2023/2024

Term 3

Tuesday 2nd January – Friday 9th February

**Tuesday 2nd January – school closed to children
for staff training**

Wednesday 3rd January – children back to school

**Tuesday 6th February – school closed to children
for staff training**

Term 4

Monday 19th February – Thursday 28th March

Term 5

Monday 15th April – Friday 24th May

Term 6

Monday 3rd June to Tuesday 23rd July

All INSET days are now in place

KEY DATES

- 02.01** School closed for staff training
- 03.01** Back to school for all children
Values Day in school
- 26.01** Parent Coffee Morning – 9am in
Annexe/Music Room
- 30.01** Parents Evening – 3.30pm – 6pm
- 01.02** Parents Evening – 4pm – 7pm
- 02.02** Parent Forum – 2pm in
Annexe/Music Room
- 06.02** School closed for staff training
- 07.02** Children back to school
- 09.02** End of term 3

- 19.02** Children back to school
- 07.03** World Book Day
- 08.03** Parent Coffee Morning
- 15.03** Red Nose Day
- 22.03** Parent Forum
- 28.03** End of term 4

More dates will be added over the course of this term.

NHS
East Sussex
School Health Service



Aged 11 to 19?

Or parent/carer of a
child or young person
aged 5 to 19 years old?

**Speak to a
school nurse
in person.**

Tuesdays and Thursdays
10am to 3 pm
and 6 to 9pm

Click <https://nhs.uk/east-sussex-school-health>
or text
07507 332473 anytime.

**East Sussex
School
Health**

Service provided by Kent Community Health NHS Foundation Trust

**Confidential, private
and here for you.**

KEEPING CHILDREN SAFE Safeguarding at Meridian

If you have a safeguarding concern about a child that attends Meridian, please do contact one of the Designated Safeguarding Leads:

Mrs. Lucy Newth

Designated Safeguarding Lead

Ms. Claire Westcott

Deputy Designated Safeguarding Lead

Mr. Matt Doody

Deputy Designated Safeguarding Lead

Miss. Laura Miles

Deputy Designated Safeguarding Lead

During the school holidays, please contact:

Single Point of Advice (SPOA) on 01323 464222

If you have an immediate or emergency concern about a child's safety, please call 999. The NSPCC has advice about this on their website [here](#).

MERIDIAN NOTICEBOARD

PARENT COFFEE MORNING

Our next Coffee Morning on **Friday 26th January** will be looking at **sleep**.

This coffee morning will be led by one of our Mental Health Support Team and our Behaviour and Pastoral Support Assistants, Mrs. Kirton and Mrs. Harmer, will also be there. It will take place in our Annexe/Music Room at 9am.

Everyone is welcome!



PARENT FORUM

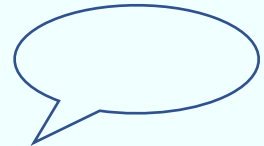
Our next Parent Forum is on **Friday 2nd February** at 2pm in the Music/Annexe Room.

As requested at our last Parent Forum, this session will be all about our wonderful curriculum and the themes and topics the children learn about during their time at Meridian.

So do come along to this informal meeting – everyone is welcome.



Look forward to seeing you there! 😊



READY RESPECTFUL SAFE

Assertive not aggressive!

We are working hard in school to support a few children, particularly in Years 5 and 6, to understand the **difference** between being **assertive** (sticking up for themselves) and becoming **aggressive**. It would be great if you could support us with this too!

In school we tell the children that if someone is **disrespectful or unkind** to them, that it is **ok to feel upset or angry** about this – these are normal human emotions. However, it is **not ok to react with aggression – verbally or physically**.

We tell the children to be assertive and say things like, “please don’t speak to me like that – it’s not respectful” or “you don’t have the right to push me – please don’t do that again” and then, if the behaviour doesn’t stop, they **MUST** tell an adult. They can obviously tell an adult that they did this too so we are aware of this negative behaviour they have experienced.

If children react **aggressively**, either physically or verbally, then this is unacceptable behaviour and can result in sanctions in school or even suspension.

I know that some parents and carers tell children that **if someone hits them, then they need to hit them back**. However, this can cause **confusion with school rules and expectations** and can result in upsetting and difficult situations to deal with. I completely understand if this is something you want to tell your children to do when they are outside of school, but in school, I’m sure you will appreciate, this can make matters much worse for all of the children.

Thank you for your support with helping children being safe and respectful in school.

LEARNING AT MERIDIAN

Finding out about your child's learning.

At Meridian, we provide lots of opportunities for you to find out about your child's learning both in school and the Nursery.

Don't forget to sign up for Parents Evenings on 30th January and 1st February – this is an important meeting where you can meet your child's teacher and find out how they are doing in school, receive a mini-report on their progress and get advice and ideas about how you can support your child with their learning at home.

Nursery parents and carers will be able to find out more about the learning in Nursery through the introduction of Tapestry – an online learning journal. We are very excited about this new resource – please bear with us whilst we are setting things up and getting used to using it!

[illegible]

PERSONAL DEVELOPMENT AT MERIDIAN

School Vision and Values

Last year, the Senior Leadership Team worked together to revisit our vision and values to make sure they were still supportive of our work in school.

As a result of this work, we developed our vision to make it as meaningful as possible for everyone, staff, governors, parents/carers, children and the wider community. Our motto “**Learning for Life**” remains the same.

Here is our new vision - we hope you like it!

From the moment our children join us, we know that every day, every lesson and every opportunity count, as we support them on their learning for life adventure. No time is wasted as we skillfully and enthusiastically inspire them to do their best, preparing them for every new challenge and every new experience. We are a team wrapped around every single child cheering them on again and again; picking them up, dusting them off when they fall, so they are ready to go again. Every child counts - and they know it.

Our values are: **Respect, Honesty, Kindness, Strength and Responsibility**
Check out our little descriptions to try and bring our values to life and explain what they mean to us [here](#)

PLAY AT MERIDIAN

Wonderful Playtimes!

The children continue to enjoy their playtimes at Meridian! We were finally able to access the field again this week now that the rain has stopped – the children were so happy to be able to spread out and play together across both playgrounds and the field.

Thank you so much for your continued support with ensuring your children have warm coats and wellies on for outside – it makes such a difference. Hopefully the weather will warm up in the next few months so that we can use our wellies less . . . watch this space!!



ATTENDANCE AT MERIDIAN

Good attendance at school is so important so that children do not miss out on their learning. Did you know that when teachers plan their lessons, each lesson builds on the previous one? So if a child misses 1 or 2 lessons a week, they will find the work much harder as they will be developing gaps in their knowledge.

If you are worried about your child's attendance or would like some support with this, please do make an appointment with one of our Pastoral Team, Mrs. Kirton or Mrs. Harmer.

Whole School Attendance

94.2% (our target is 96%)

Best Attendance this term

Week 1: 5BPS – 99.5% 😊😊

Week 2: 3YM – 96.8% 😊

