

Learning for life!

Meridian Newsletter

Term 3

**Tuesday 2nd January –
Friday 9th February**

Term 4

**Monday 19th February –
Thursday 28th March**

www.meridianschool.co.uk



Meridian Community Primary
School and Nursery



@MeridianCPS

**Friday
9th**

**February
2024**

HEADTEACHER UPDATE

Dear Parents and Carers

I hope you are all well and looking forward to half-term. The last six weeks have whizzed by and I can't believe we are already half way through the academic year!

This is a shorter newsletter than usual as I know I sent out lots of information last week.

Mobile Phones in school

We are noticing increasing numbers of mobile phones coming into school with our Year 5 and Year 6 children – and some of these are clearly very expensive. With this in mind, I would like to remind parents that whilst we accept that you have allowed your child to bring a mobile phone into school, this is done at the owner's risk. We will continue to support you by storing these phones in school office during the day to minimise any risk but ultimately the school is not responsible for any damage or loss that happens to these mobile phones in school.

Nursery Changes

Please make sure you have read the letters that came out today about the changes to Nursery drop off and picks from 19th February and Nursery places offer from September 2024. If you have any questions, please contact the school office office@meridian.e-sussex.sch.uk

School Trips

I wanted to take this opportunity to thank you all for supporting the exciting trips that children enjoy as part of their learning and our curriculum offer – we really do appreciate you paying for these so that we can bring the children's learning to life! Next term, Year 1 and Year 2 children will be visiting Ashdown Forest as part of their Woodlands topic; Years 3 and 4 will be visiting Drusillas to learn about animals who live in the Rainforest; Years 5 and 6 will also be visiting Drusillas to learn about penguins and polar climate animals, including climate change. Reception are planning a visit to Washbrook Farm as part of their learning about looking after animals and plants and Nursery are hoping to have some animals visit them. I am sure I will be able to share some lovely photos next term. Thank you again for your support.

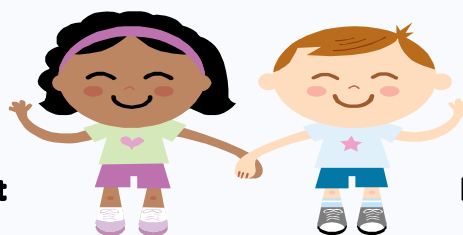
I hope you have a wonderful half-term holiday and look forward to seeing the children back on Monday 19th February.

C. Westcott

Claire Westcott
Headteacher

strength

respect



kindness

honesty

responsibility

IMPORTANT INFORMATION

TERM DATES 2023/2024

Term 3

Tuesday 2nd January – Friday 9th February

**Tuesday 2nd January – school closed to children
for staff training**

Wednesday 3rd January – children back to school

**Tuesday 6th February – school closed to children
for staff training**

Term 4

Monday 19th February – Thursday 28th March

Term 5

Monday 15th April – Friday 24th May

Term 6

Monday 3rd June to Tuesday 23rd July

All INSET days are now in place

KEY DATES

- 02.01** School closed for staff training
- 03.01** Back to school for all children
Values Day in school
- 26.01** Parent Coffee Morning – 9am in
Annexe/Music Room
- 30.01** Parents Evening – 3.30pm – 6pm
- 01.02** Parents Evening – 4pm – 7pm
- 02.02** Parent Forum – 2pm in
Annexe/Music Room
- 06.02** School closed for staff training
- 07.02** Children back to school
- 09.02** End of term 3

- 19.02** Children back to school
- 07.03** World Book Day
- 15.03** Red Nose Day
- 22.03** Parent Coffee Morning 9am
Parent Forum 2pm
- 28.03** End of term 4

More dates will be added over the course of this term.

NHS
East Sussex
School Health Service



Aged 11 to 19?

Or parent/carer of a
child or young person
aged 5 to 19 years old?

**Speak to a
school nurse
in person.**

Tuesdays and Thursdays
10am to 3 pm
and 6 to 9pm

Click <https://nhs.uk/east-sussex-school-health>
or text
07507 332473 anytime.

**East Sussex
School
Health**

Service provided by Kent Community Health NHS Foundation Trust

**Confidential, private
and here for you.**

KEEPING CHILDREN SAFE Safeguarding at Meridian

If you have a safeguarding concern about a child that attends Meridian, please do contact one of the Designated Safeguarding Leads:

Mrs. Lucy Newth

Designated Safeguarding Lead

Ms. Claire Westcott

Deputy Designated Safeguarding Lead

Mr. Matt Doody

Deputy Designated Safeguarding Lead

Miss. Laura Miles

Deputy Designated Safeguarding Lead

During the school holidays, please contact:

Single Point of Advice (SPOA) on 01323 464222

If you have an immediate or emergency concern about a child's safety, please call 999. The NSPCC has advice about this on their website [here](https://www.nspcc.org.uk).